



2023 EVICTION DATA

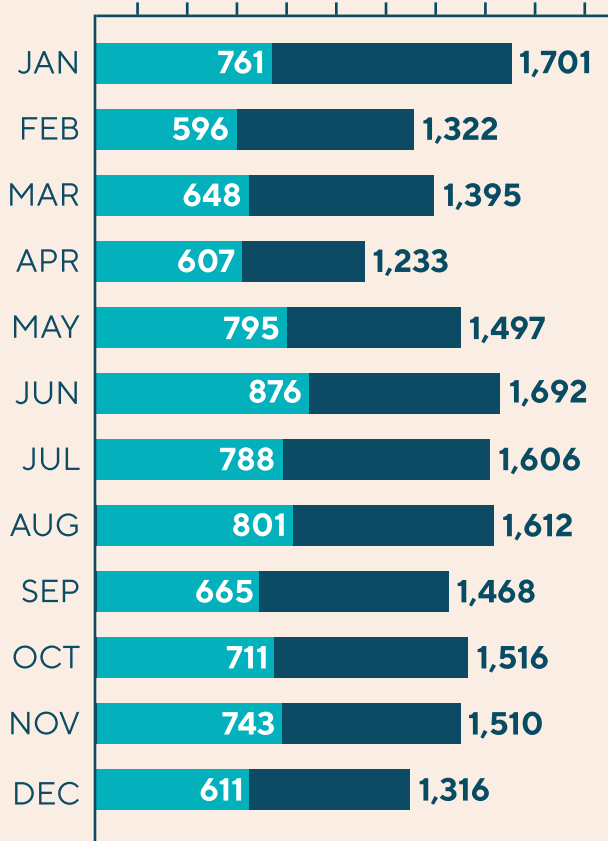


A family safely housed is a family connected to hope and a way forward.

A stable home is one of the most critical factors in a family's success. When individuals—adults and children alike—experience housing instability or homelessness, their prospects for education, employment, health stability, and family preservation are significantly reduced.

Imagine how much stress, suffering, and cost we could prevent if we prioritized housing.

Eviction filings and judgments



17,868

Evictions filed in Oklahoma County
in 2023

8,602

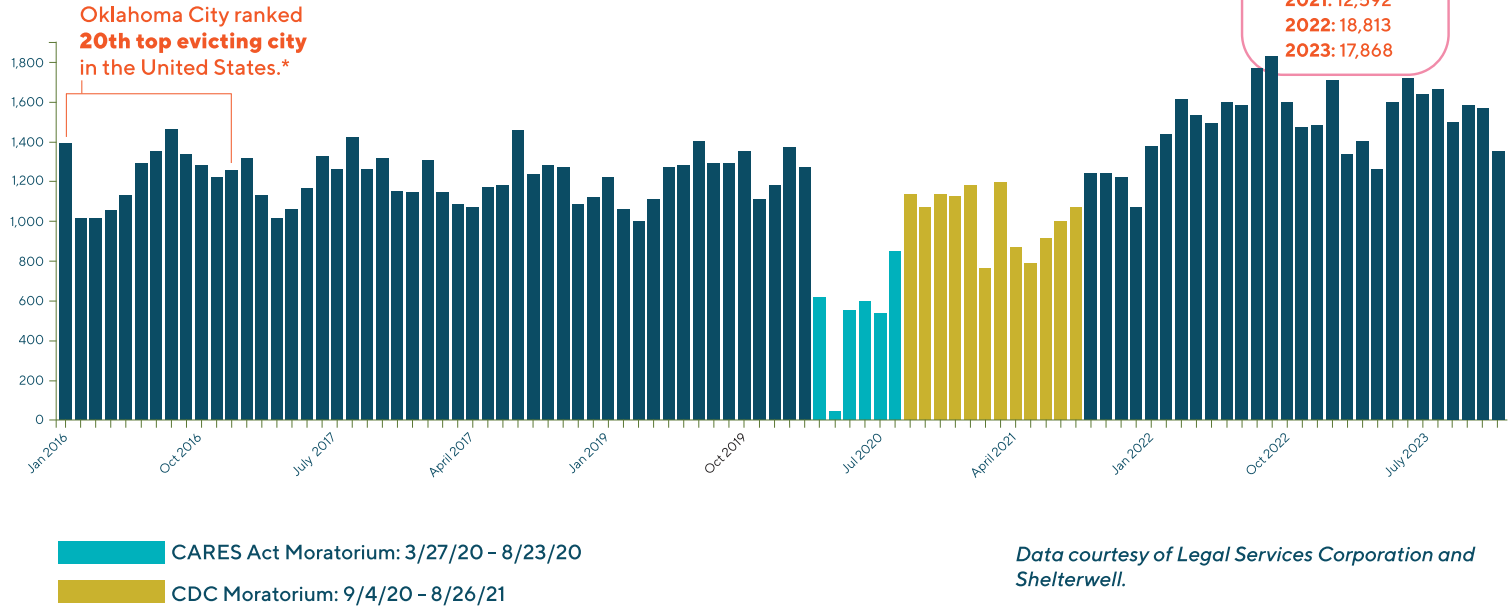
Judgments resulting in
eviction

73%

of cases resulting in eviction were due
to the tenant not being present at
court.

Eviction Filings in Oklahoma County

January 2016 - December 2023



Data courtesy of Legal Services Corporation and Shelterwell.

*Data courtesy of Eviction Lab.



36%

of evictions were filed by
out-of-state landlords.

\$1,556

average past-due rent at court.

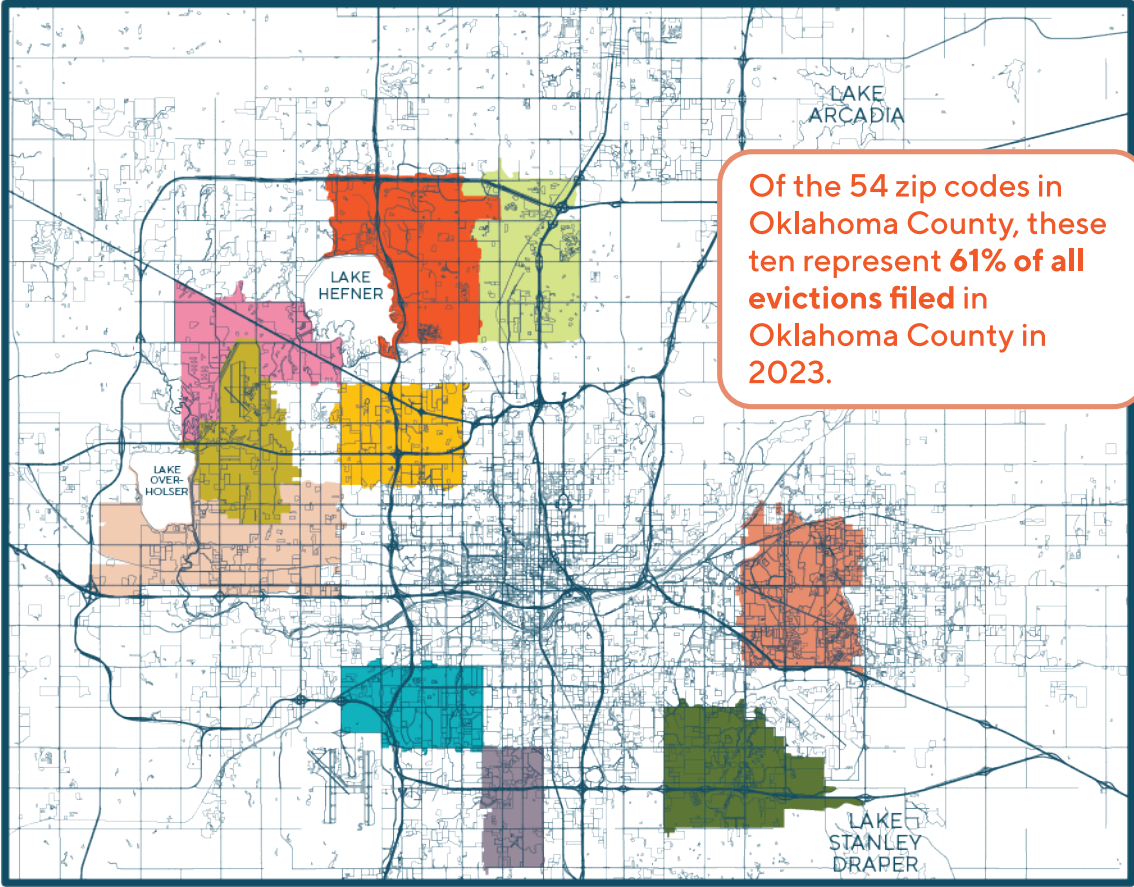
\$1,095

average rent in Oklahoma County.

ZIP CODES WITH HIGHEST EVICTION RATES IN 2023

Percentages are determined by total number of eviction filings.

11%	73120
8%	73132
8%	73110
7%	73127
6%	73112
6%	73114
4%	73135
4%	73008
4%	73119
3%	73139



OKLAHOMA COUNTY



*In Oklahoma County, 69% of landlords were represented by an attorney. **Only 8% of tenants had legal representation.***



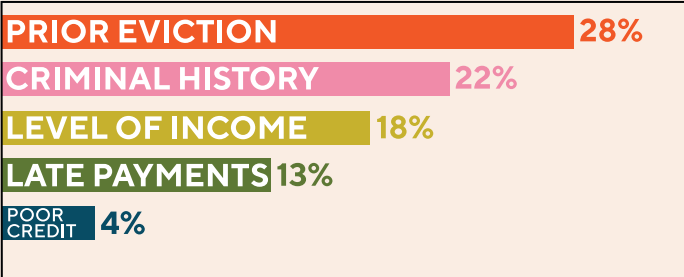
A recent study in Hamilton County, Ohio, found that tenants with legal representation had an **84% lower risk of receiving an eviction order** than tenants who did not have a lawyer.

(2023, May 15). Tenants without an attorney in local eviction court are 84% more likely to lose housing, study finds. WVXU News. <https://www.wvxu.org/local-news/2023-05-15/tenants-without-attorney-eviction-court-lose-housing-study>

An eviction filing is an on-ramp to homelessness.



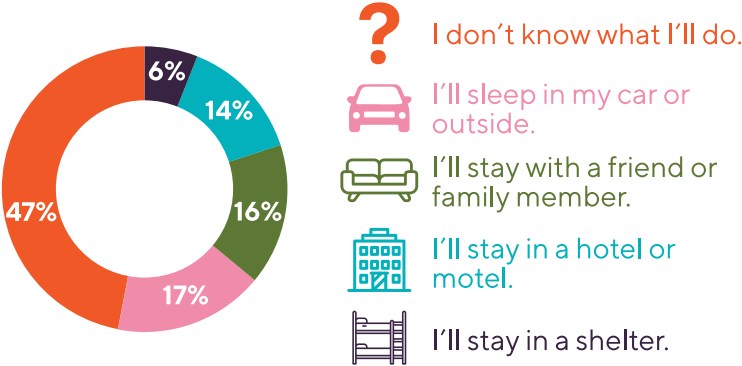
As a landlord, what would concern you **the most** when screening a prospective tenant?



Survey responses of 100 landlords and property managers.

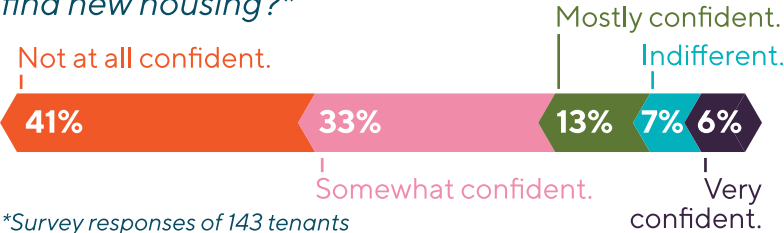
Most families facing eviction will experience a period of homelessness.

*If you are evicted today, what is likely to occur before you find new housing?**



An eviction makes it more difficult to find new housing.

*How confident do you feel in your ability to find new housing?**



*Survey responses of 143 tenants facing eviction.

The Cost of Eviction

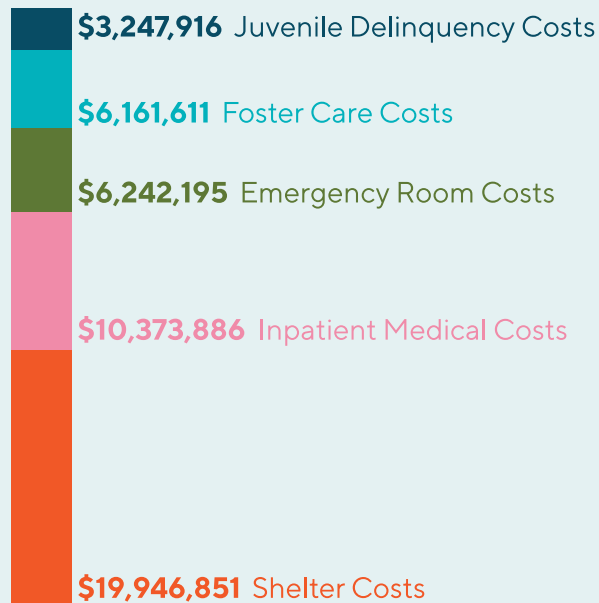
Of the **17,868 evictions** filed in Oklahoma County in 2023, **8,602 families were evicted.**

The National Alliance to End Homelessness estimates that **one unhoused individual costs taxpayers \$96 per day.**

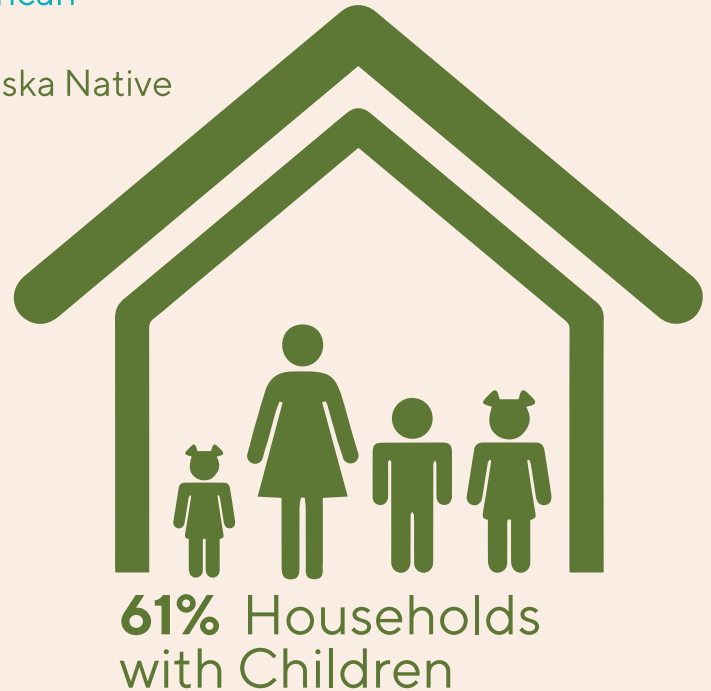
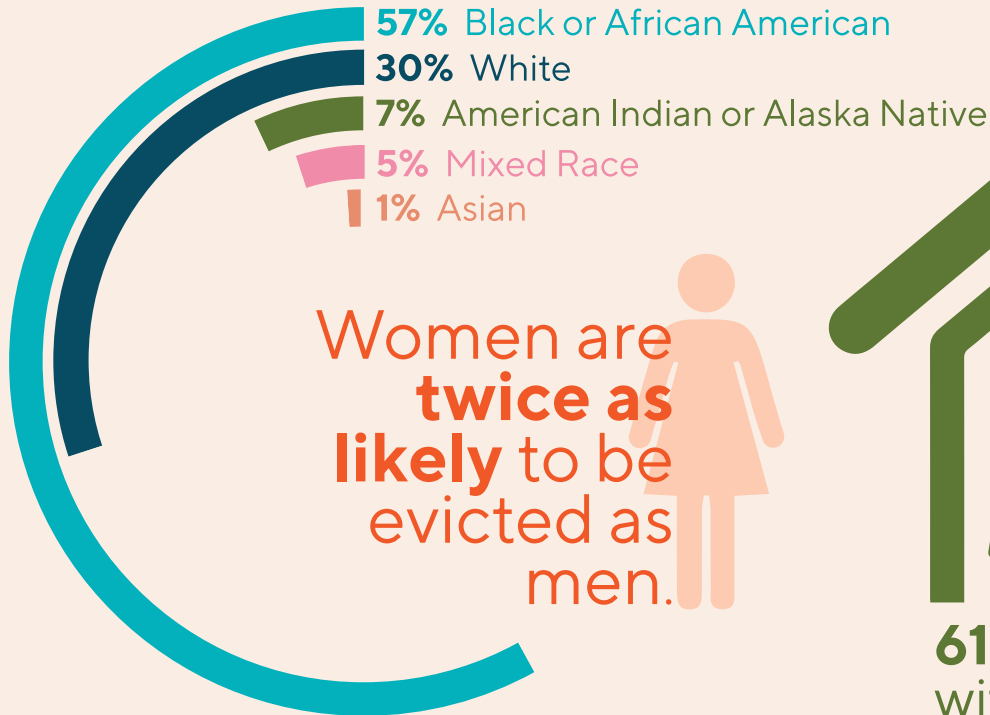
Even if those evicted in 2023 experienced **only one day of homelessness**, the **estimated taxpayer cost is \$2,047,964.**

Developed by The Lab at University of Arizona, the Cost of Eviction Calculator uses some of the most prominent downstream costs of eviction to estimate the full economic impact of displacement.

Using this tool, **the estimated economic impact of 8,602 evictions in Oklahoma County in 2023 is \$45,972,459.**



Who is being evicted in Oklahoma County?



A photograph of a residential street. In the foreground, a large, messy pile of discarded items sits on the sidewalk. The pile includes cardboard boxes, a white plastic tub, a blue metal frame, a wooden chair, and various bags of trash. Behind the pile is a two-story brick house with a white door and windows. The sky is blue with some clouds. The text "Home is stability. Home is comfort." is overlaid on the image in a large, white, serif font. The words "stability" and "comfort" are highlighted with a yellow background.

“Home is **stability.**
Home is **comfort.**”

– A tenant facing eviction in Oklahoma County



shelterwell.org



@shelterwellorg